

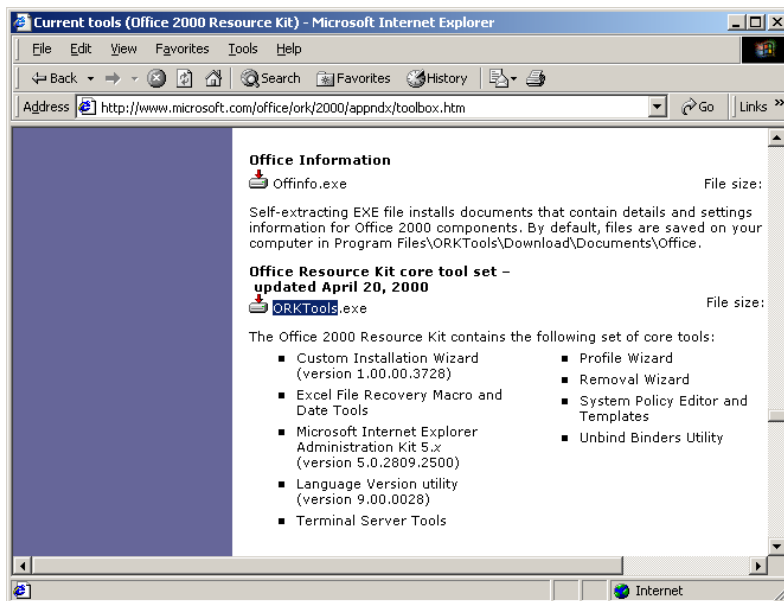
Installing Windows Terminal Server Applications

To access Windows Terminal Server applications individually from the AccessPoint SSL VPN portal (launching applications such as Microsoft Word or Excel from the portal), you need to perform the following instructions.

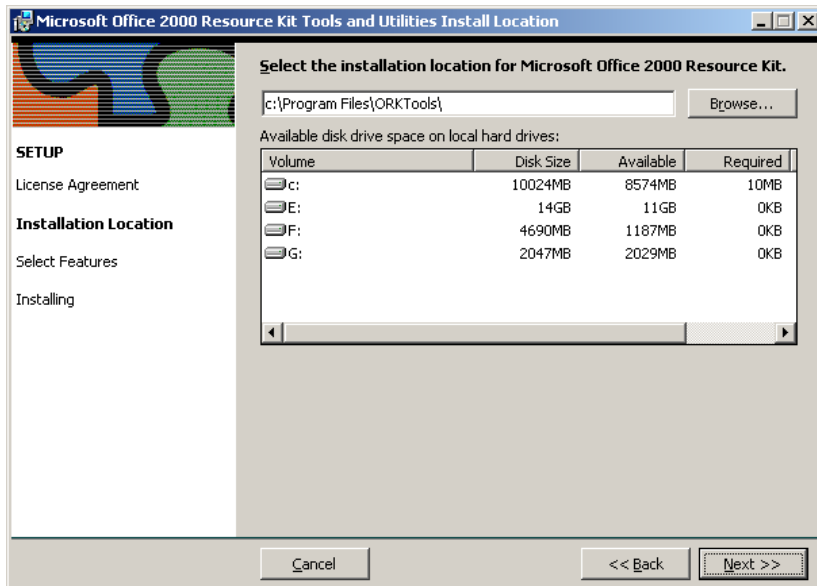
You must run Terminal Services in application mode and Terminal Services must be configured to use a Terminal Services Licensing server.

First download and install the Microsoft Office Resource Kit tool set at:

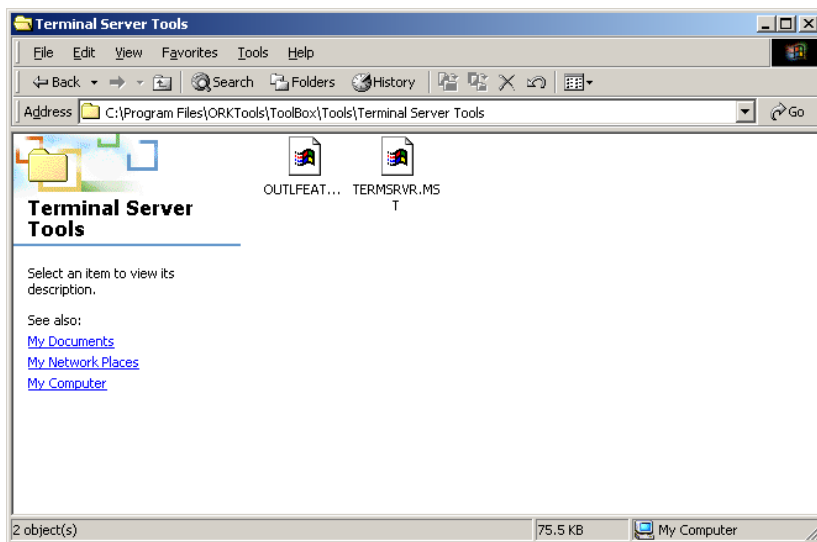
<http://www.microsoft.com/office/ork/2000/appndx/toolbox.htm>



Download the Office Resource Kit core tool set, **ORKTools.exe**. Then install ORKTools.exe.



The installation will add a `TermSrvr.mst` file to a directory on your server.



When you install Microsoft Office, you need to install through the **Control Panel Add/Remove Programs**. View the entire installation procedure at:

http://www.microsoft.com/office/ork/2000/two/30t3_2.htm

Install Office on the Terminal Server computer (From the Microsoft web site instructions)

1. In Control Panel, double-click **Add/Remove Programs**.

2. Click **Install**, and then click **Next**.
3. Click **Browse**.
4. In the root folder of your Microsoft Office CD-ROM (or other Windows application CD-ROM), select **setup.exe** and click **OK**.

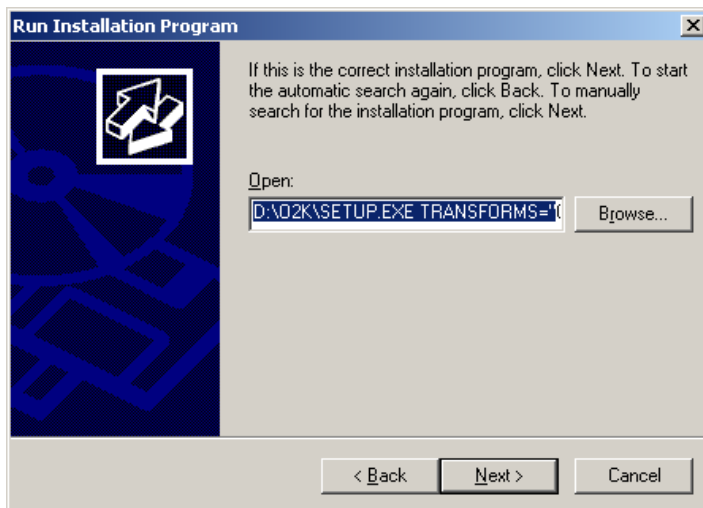
Setup.exe will be added to the **Command line for installation program** box.

5. On the command line, add the following after **setup.exe**, separated by spaces:

```
TRANSFORMS="path\TermSrvr.mst"
```

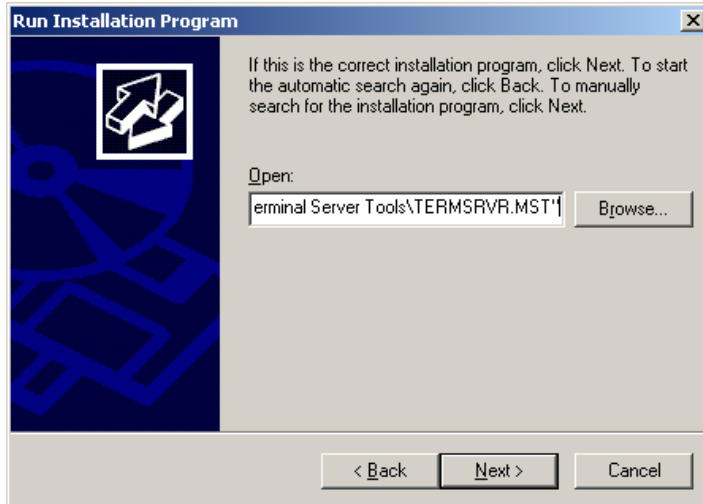
For example, enter:

```
D:\O2K\SETUP.EXE TRANSFORMS="C:\Program Files\ORKTools\ToolBox\Tools\Terminal Server Tools\TERMSRVR.MST"
```



This command identifies the Terminal Server transform for Setup to use during installation. Specify the correct path to the `TermSrvr.mst` file.

6. Click **Next**.



7. In **Add/Remove Programs**, select **All users begin with common application settings**, and then click **Next** to run Office Setup.