

Installation Procedure for the SSL Certificate

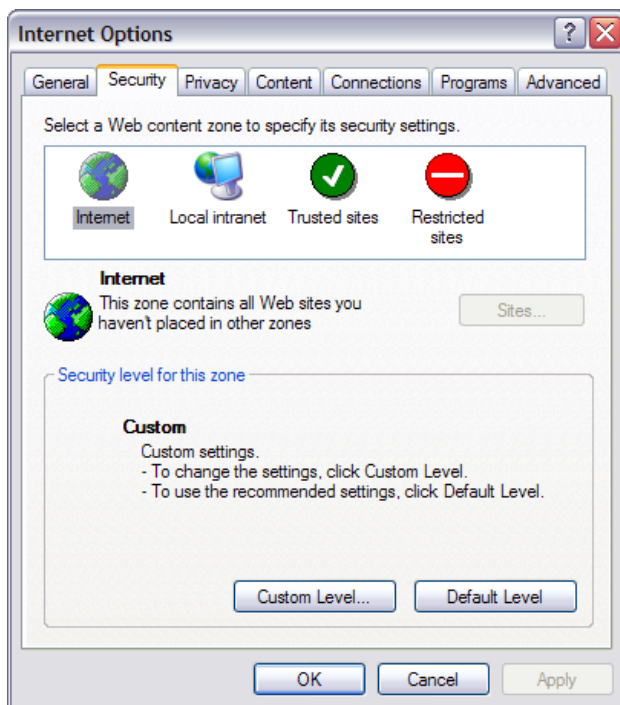
The AccessPoint Virtual Passage, an SSL VPN client for Windows 2000 and Windows XP, is installed and run from a web browser using ActiveX.

Because of Internet Explorer security issues, in order to install the ActiveX program, you must first check the web browser and certificate settings.

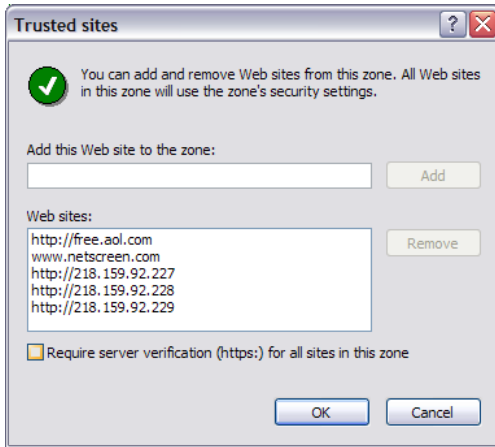
The web browser must be set to accept and run ActiveX controls. In addition, AccessPoint version 1.0 Virtual Passage software is not signed with a certificate (Authenticode), so the browser must enable or prompt to download unsigned ActiveX controls and initialize or script ActiveX controls not marked as safe.

To verify these settings, view the web browser security settings. The safest way to enable these settings while not exposing the web browser to security threats is to configure the SSL VPN gateway device as a **Trusted Site**.

1. Select **Internet Options** from the Internet Explorer **Tools** menu.
2. Select the **Security** tab in the Internet Options dialogue window. A window similar to the following will be displayed.



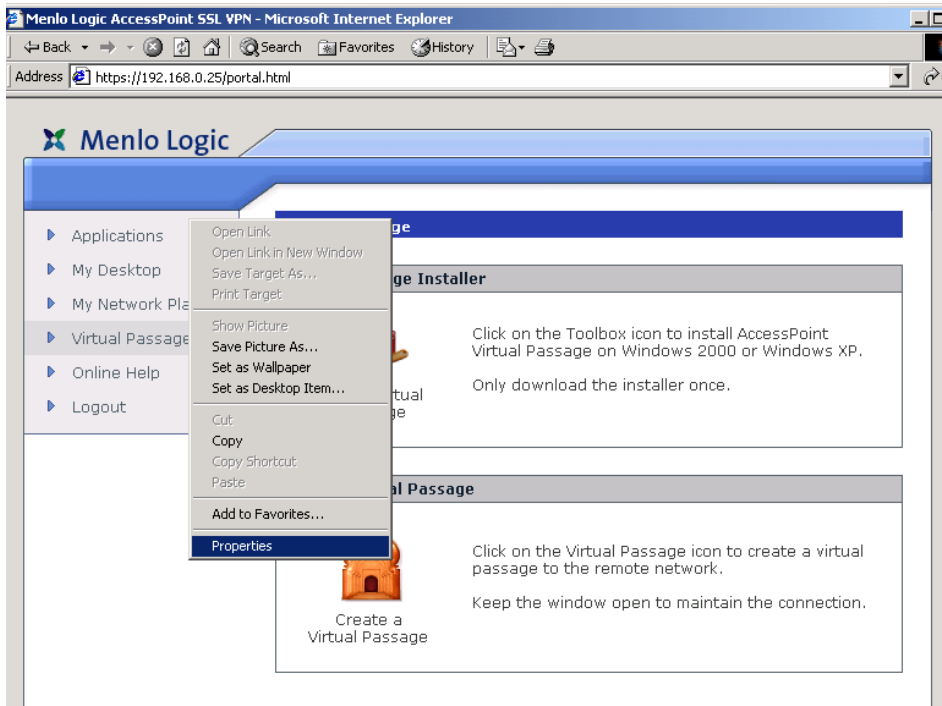
3. Select the **Trusted Sites** option, then click **Sites**. A Trusted Sites window will be displayed.



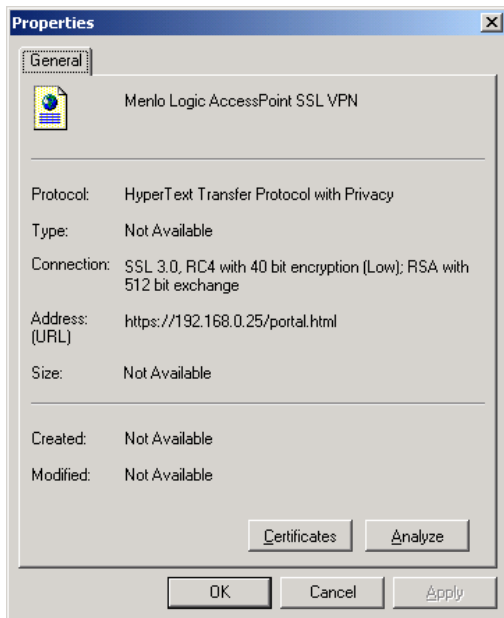
4. Enter the name or IP address of the SSL VPN gateway in the **Add this Web site to the zone** field and click **Add**.
5. Click **OK** to close the Trusted Sites window.
6. Click **OK** to close the Internet Options window.

If you do not have a valid SSL certificate signed by a root certificate authority such as Thawte or Verisign, you will need to import the certificate. Follow the following procedure to import the certificate before you can install and run the Virtual Passage software.

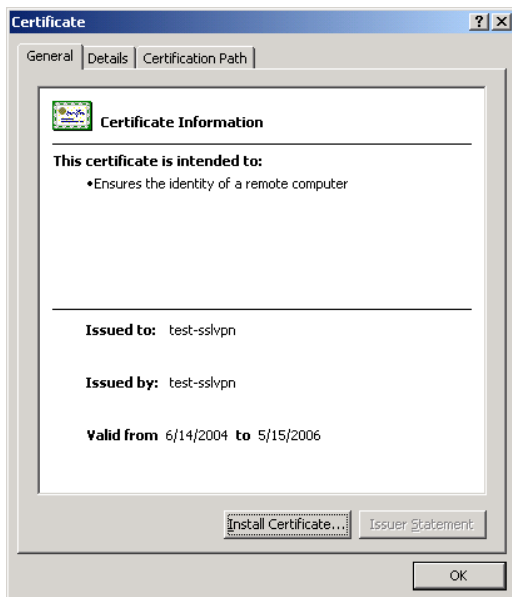
1. Once you log into the SSL VPN portal, right click on the web browser window and select **Properties**.



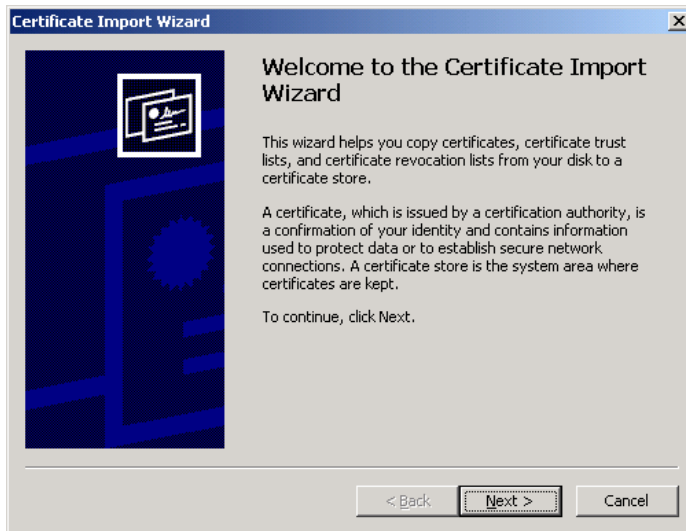
The web site Properties window will be displayed.



2. Click on **Certificates**. The Certificates window will be displayed.



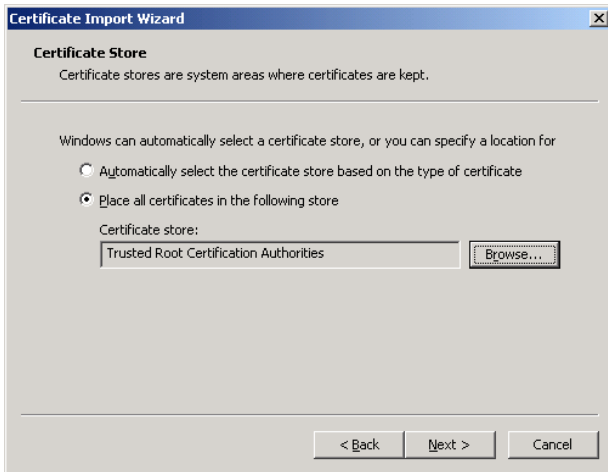
3. Click on **Install Certificate...** The **Certificate Import Wizard** will be displayed.



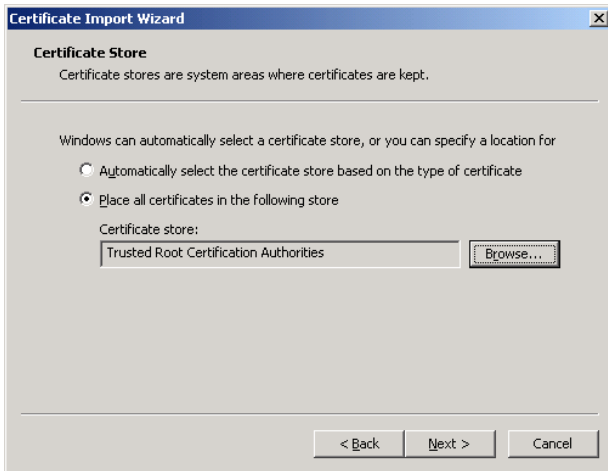
4. Click **Next**. Then select the **Place all certificates in the following store** radio button and click **Browse**. The **Select Certificate Store** window will be displayed.



5. Select **Trust Root Certification Authorities**. Then click **OK**. The Certificate Import Wizard will show the new certificate store.



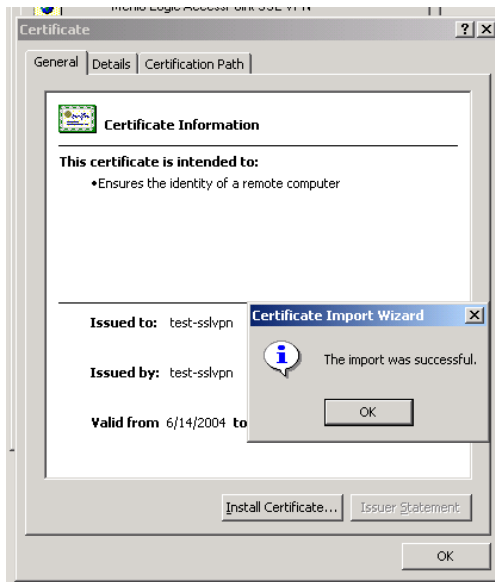
6. Select **Trust Root Certification Authorities**. Then click **OK**. The Certificate Import Wizard will show the new certificate store.



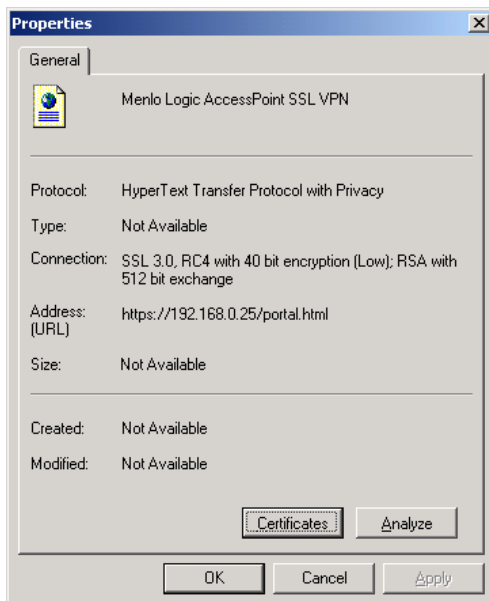
7. Then click **Finish**.



8. The Certificate window will confirm the successful import. Click **OK**.



9. Repeat the same procedure, installing the certificate as an **Enterprise Trust**. Once you have completed the process, click **OK** in the Properties window.



10. Close all open web browsers.

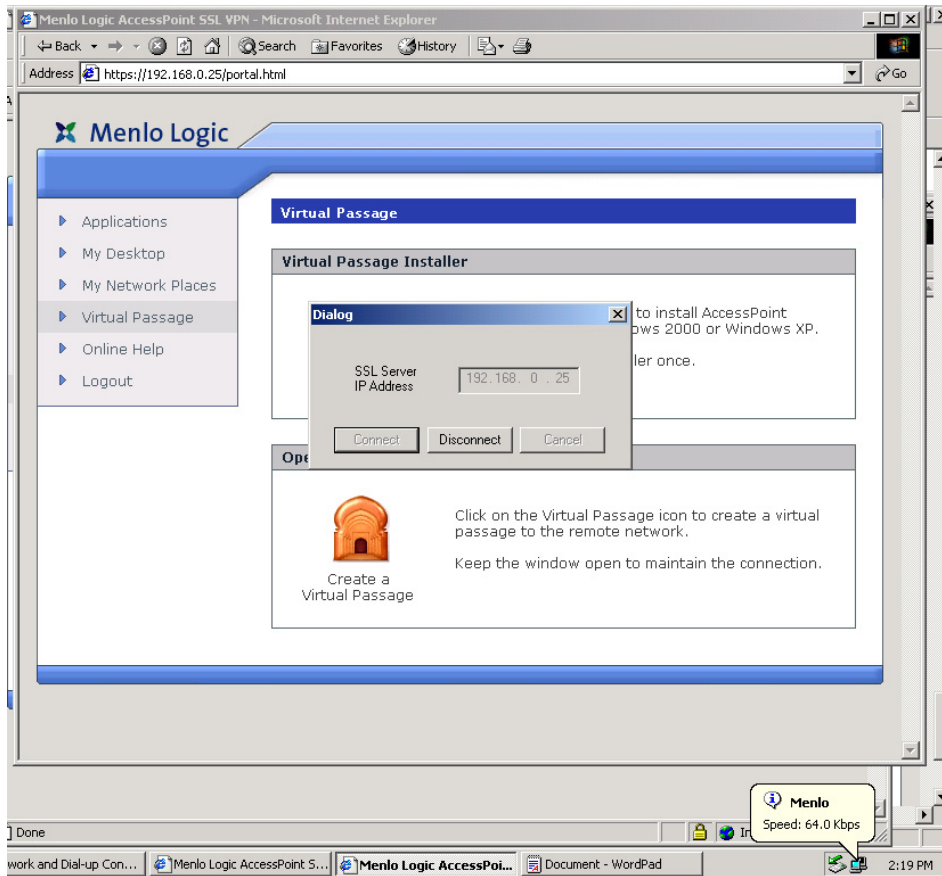
11. Launch Internet Explorer and log into the SSL VPN portal.

12. Click **Virtual Passage** in the SSL VPN portal left navigation menu. The Virtual Passage window will be displayed.

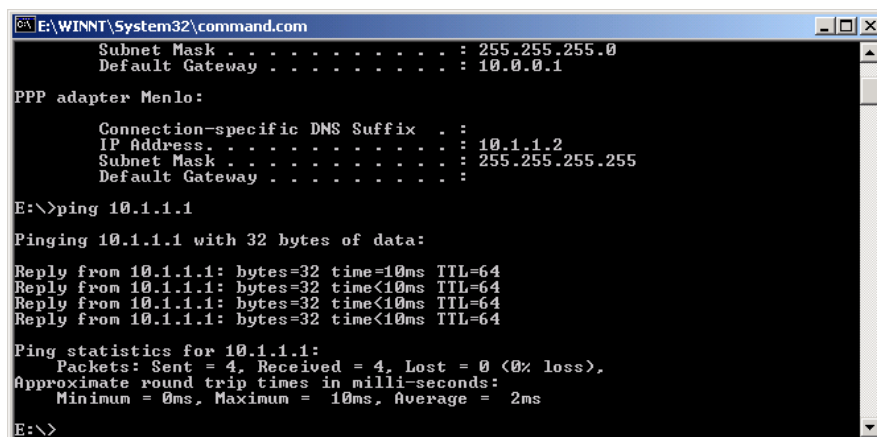
13. Install Virtual Passage by clicking on the **Install Virtual Passage** icon.

14. Open a connection by clicking on the **Create a Virtual Passage** icon.

15. In the Dialog box, click **Connect**. After several seconds, the Virtual Passage software should connect to the SSL VPN gateway.



16. To test the Virtual Passage, open a MS-DOS terminal prompt. Type “ipconfig”. The Menlo PPP adapter should be displayed.



17. Then ping or telnet to the SSL VPN gateway. The SSL VPN gateway’s address is the first IP address of the IP address range assigned in the Client Addresses range in the AccessPoint administrative interface.